



# NEW! TENA Dry Comfort™ Briefs

## The curve-shaped design helps ensure a body-close fit

New TENA Dry Comfort™ Briefs with CurvDefence™ have a new curve-shaped design and curved leg elastics to help ensure a comfortable, body-close fit. Patented DuoLock® Core Technology helps deliver more absorption capacity where it's needed most for optimal product performance. The EzFasten® fastening system helps make product application comfortable for the wearer, helps provide a secure fit, and the Ultra Back Panels provide enhanced coverage. Meets NAFC Standard Requirements.



### CurvDefence™

Curve-shaped design helps ensure a body-close fit

### Ultra back panel

Provides enhanced coverage



### DuoLock® Core

Wicks away and locks in moisture away from skin

### EzFasten® fastening system

Helps provide a secure and comfortable fit



### Wetness indicator

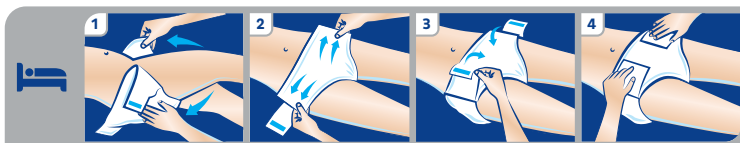
Indicates the brief may have been soiled and needs to be checked



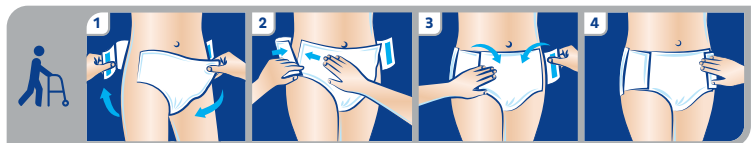
Product Name	Absorbency	Order #	Hip Size	Color	Case	Format
TENA Dry Comfort™ Briefs M		67420	32" – 44"	White	80	4/20
TENA Dry Comfort™ Briefs L		67430	40" – 56"	Blue	80	4/20
TENA Dry Comfort™ Briefs XL		67440	52" – 62"	Beige	80	4/20

## TENA Dry Comfort™ Briefs Fitting Guide

### Lying down



### Standing up



**BETTER CARE FOR EVERYONE**

### Contact us for further information

1.866.722.6659 [essityorders@essity.com](mailto:essityorders@essity.com)

TENA, DuoLock and EzFasten are a registered trademarks of Essity Hygiene and Health, AB. TENA Dry Comfort and CurvDefence are trademarks of Essity Hygiene and Health, AB. ©2023 Essity HMS North America Inc. J23 65066 RN